



May 2025



Recovery of forest ecosystems on Kawau Island

Working towards a pest-free Kawau Island

Operational update

Active efforts to remove wallabies and possums from Kawau Island are now underway, following several months of detailed planning and site preparation.

Work began in February 2025 with the setup of critical infrastructure. This included reinstating the Department of Conservation's (DOC) temporary wallaby fence, installing a network of wildlife monitoring cameras, establishing an operational base, and coordinating the necessary equipment and logistics.

Progress as of early May:

- **132** wildlife cameras installed across the island and actively collecting data
- **2.3 km** of DOC wallaby fence reinstated, secured with over **2,000 ground pins**
- Operational base fully established and resourced
- Over **200 hours** logged by the field team
- **393 km** covered on foot
- Support from trained indicator dogs, thermal drones, wildlife cameras, and possum traps.

Ground control operations have now begun at the southern end of the island, starting on public conservation land and gradually expanding into private properties. Although most fieldwork is carried out at night, the team has been rewarded with sightings of Kawau Island's native wildlife.

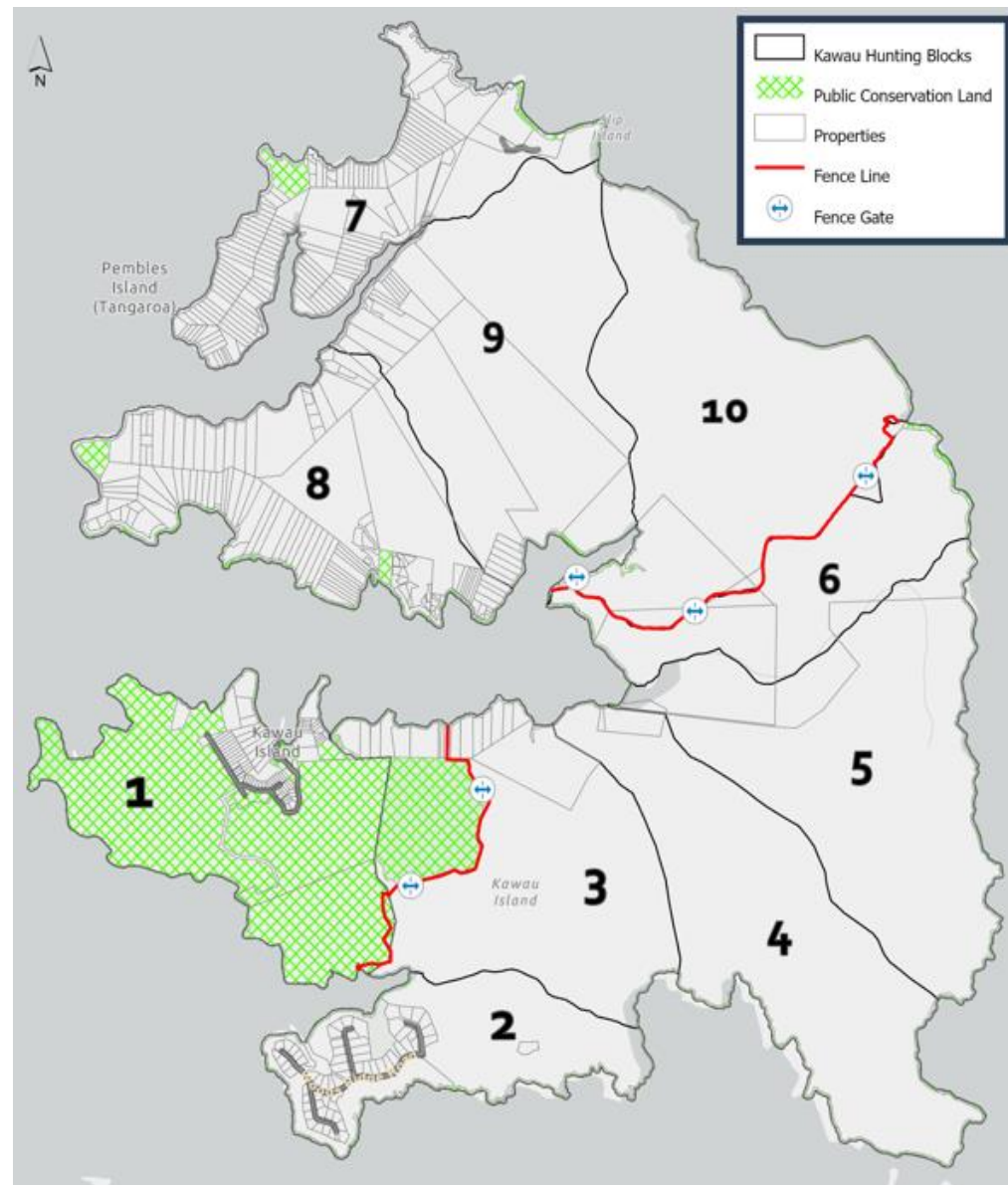
Check out this image of a North Island Brown Kiwi captured by one of the field cameras installed on the island:



The team's current focus is on Block 1 (see map below). Once work there is complete, efforts will shift to Blocks 2 and 3. In June, possum specialist Cameron Grey and his trained detection dog Nesha will begin targeted possum removal, followed by verification to ensure Block 1 is pest-free.

Subject to permit approval and monitoring outcomes, targeted toxins will be used to support hunting and this is expected to begin in June. Toxins will be applied only in clearly defined areas where high numbers of wallabies and possums have been confirmed. Pre-feeding with non-toxic bait will occur beforehand, and rodenticides may be used in bait stations to minimise interference from rats.

All residents and landowners will be notified in advance of any toxin application, including specific timing and locations, and will be informed once any uneaten bait is removed.



Project factsheets

Key Information for landowners, residents and visitors to Kawau Island

The project team have prepared a factsheet outlining important information for landowners, occupiers and visitors to the island. It contains key information that is important to read.

Safety Measures

- Residents and landowners will be notified if, when and where toxins are used, and when uneaten baits are removed.
- The two toxins registered for use on wallabies are encapsulated cyanide (Feratox) and 1080 cereal pellets/paste or applied to carrots. Both toxins will be used during this project under a public health permit where conditions are specified to keep people safe.
- Warning signs will be placed at potential entry points to each management area/block and remain until the cautionary period ends.
- Water sampling will be carried out following the toxin application for some streams from which private drinking water is taken.

For more information, [check our key information for landowners and residents factsheet](#).

Protecting your dog

Dogs are the most at-risk pets during toxin pest control operations. Always supervise your dog and keep them on leash in affected areas. Do not let them roam or scavenge baits or carcasses. Observe council's signage and caution periods.

Consider using a muzzle. Dog owners on Kawau can request a muzzle from the Kawau Community Liaison, please phone 027 266 8373 or email kawau@islandconservation.org

If you suspect your dog has eaten 1080 poison, make the dog vomit immediately if possible and call your vet straight away.

Emetic medication is available on request before and during the operation via Warkworth Vet Clinic – 09 425 8244

Alternatively, contact the Auckland Council call centre (24 hours) – 301 0101 – for locations of emergency emetic medication.

For more information, [check our dog protection factsheet](#).

Previous newsletters and more

If you are new to these newsletters or want to access previous versions, these are available online on [Tiaki Tamaki Makaurau](#).

There is also a separate [project updates page](#) where we share key project updates as they come.

You can also find more information, and watch our video, on the [Kawau Island project page](#).

Contact us

If you have any questions, you can reach us at kawauislandproject@aucklandcouncil.govt.nz

[Unsubscribe](#)